

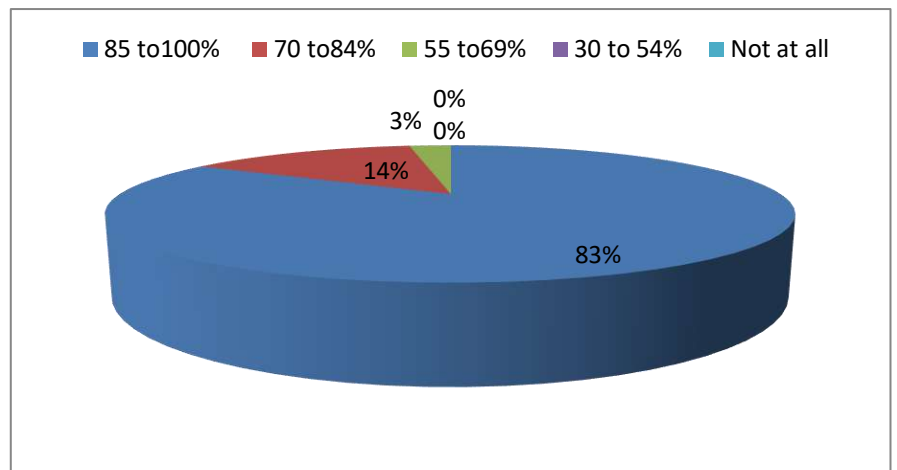
# JITS Student Satisfaction Survey (Teaching - Learning and Evaluation)

Total Number Students on rolls in Academic Year 2020-21 : 1569

Number of students responded : 1357

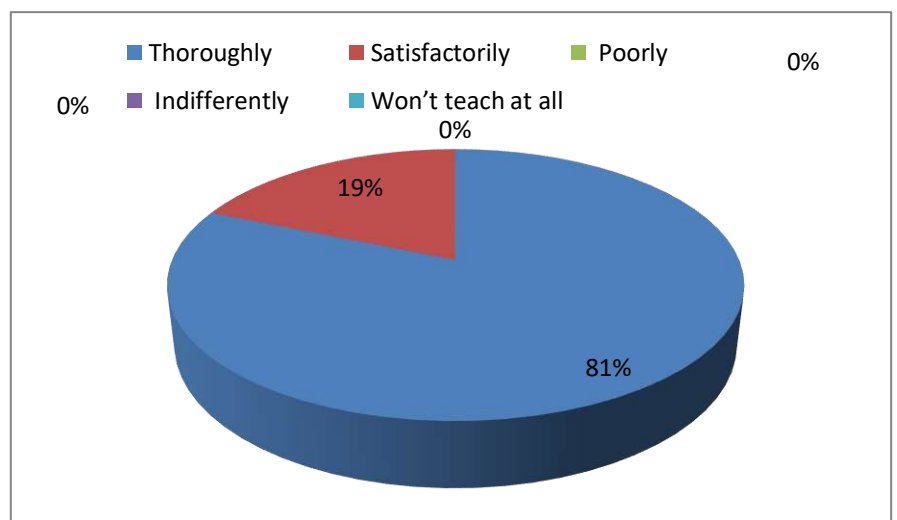
1. How much of the syllabus was covered in the class?

- 4- 85 to100%
- 3 - 70 to84%
- 2 - 55 to69%
- 1- 30 to 54%
- 0 -Below 30%



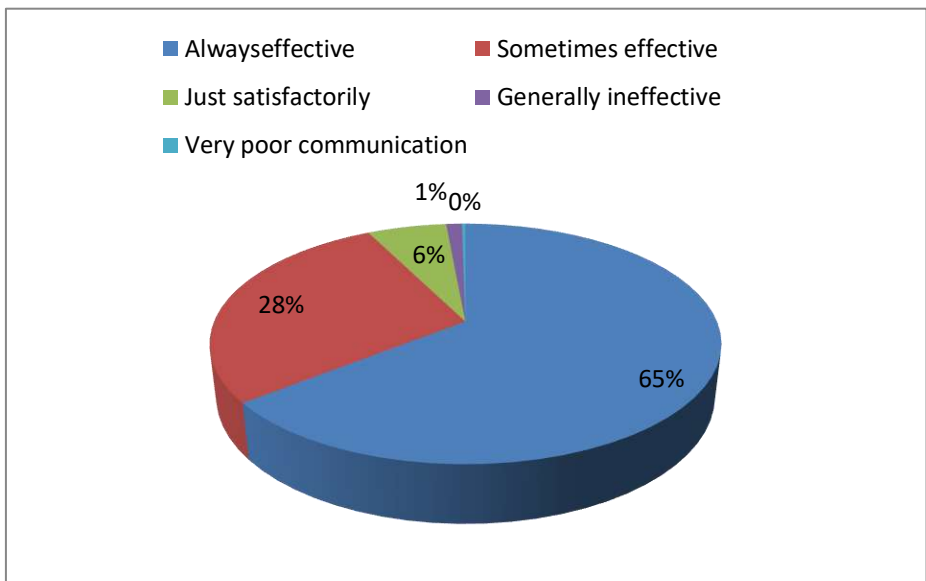
2. How well did the teachers prepare for the classes?

- 4-Thoroughly
- 3 - Satisfactorily
- 2 - Poorly
- 1 - Indifferently
- 0 - Won't teach at all



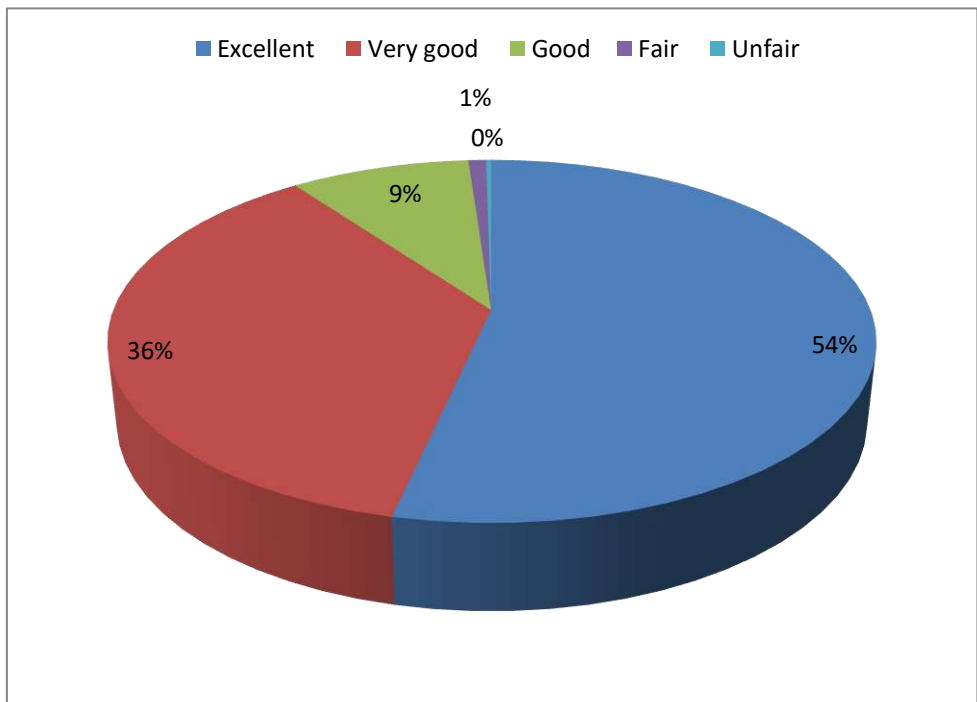
3. How well were the teachers able to communicate?

- 4- Always effective
- 3 - Sometimes effective
- 2 - Just satisfactorily
- 1- Generally ineffective
- 0- Very poor communication



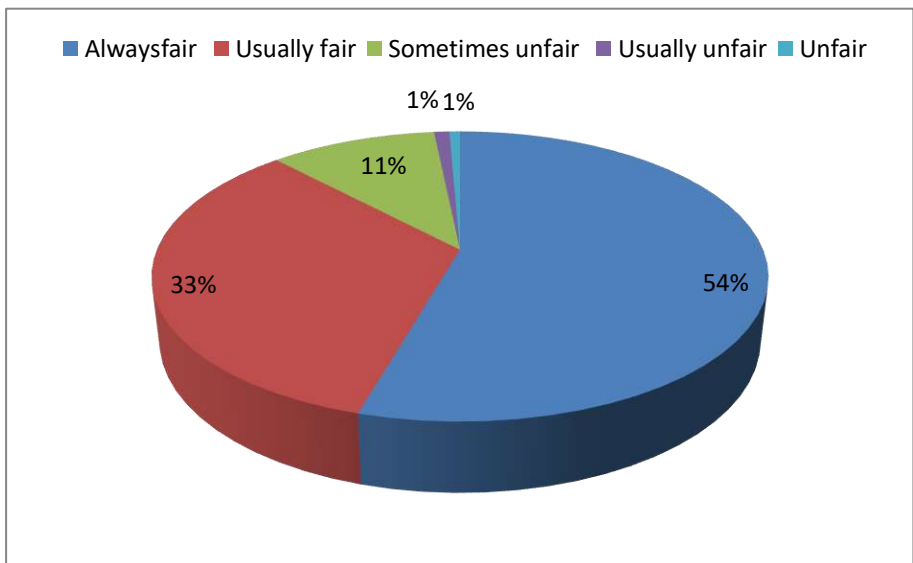
4. The teacher's approach to teaching can best be described as

- 4-Excellent
- 3-Very good
- 2-Good
- 1-Fair
- 0- Unfair



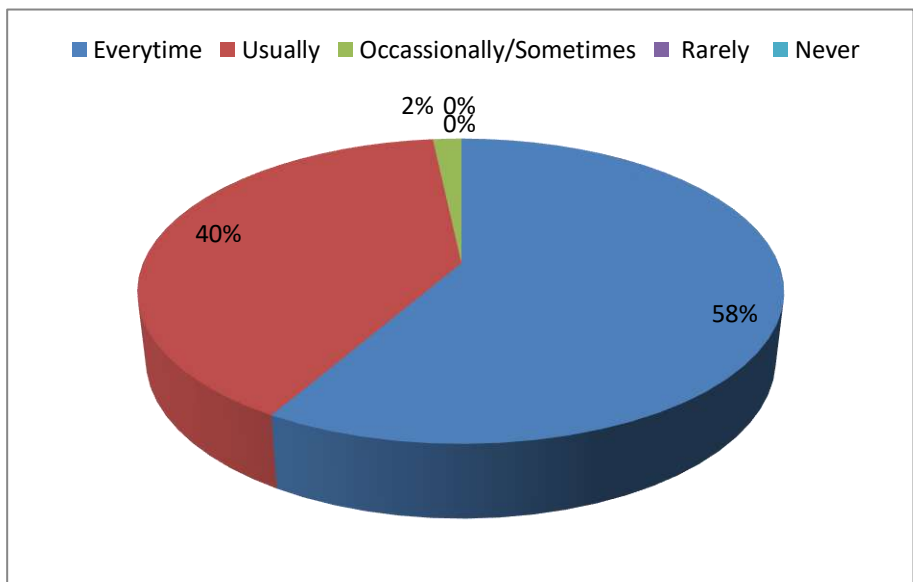
5. Fairness of the internal evaluation process by the teachers. \*

- 4– Alwaysfair
- 3 – Usually fair
- 2 – Sometimes unfair
- 1 – Usually unfair
- 0– Unfair



6. Was your performance in assignments discussed with you? \*

- 4 – Everytime
- 3 – Usually
- 2 – Occasionally/Sometimes
- 1 – Rarely
- 0– Never



7. The institute takes active interest in promoting internship, student exchange, field visit opportunities for students. \*

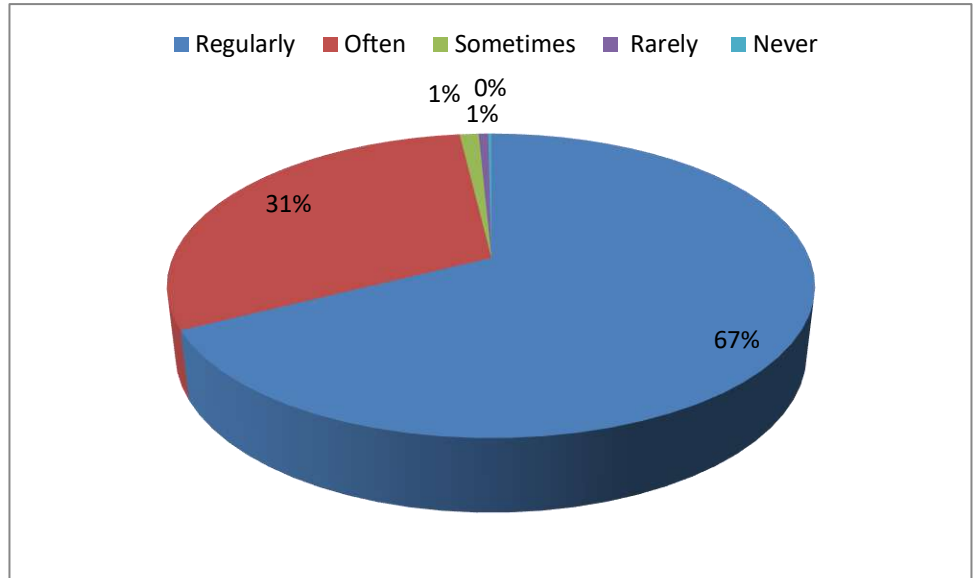
4 – Regularly

3 – Often

2 – Sometimes

1 – Rarely

0– Never



8. The teaching and mentoring process in your institution facilitates you in cognitive, social and emotional growth.

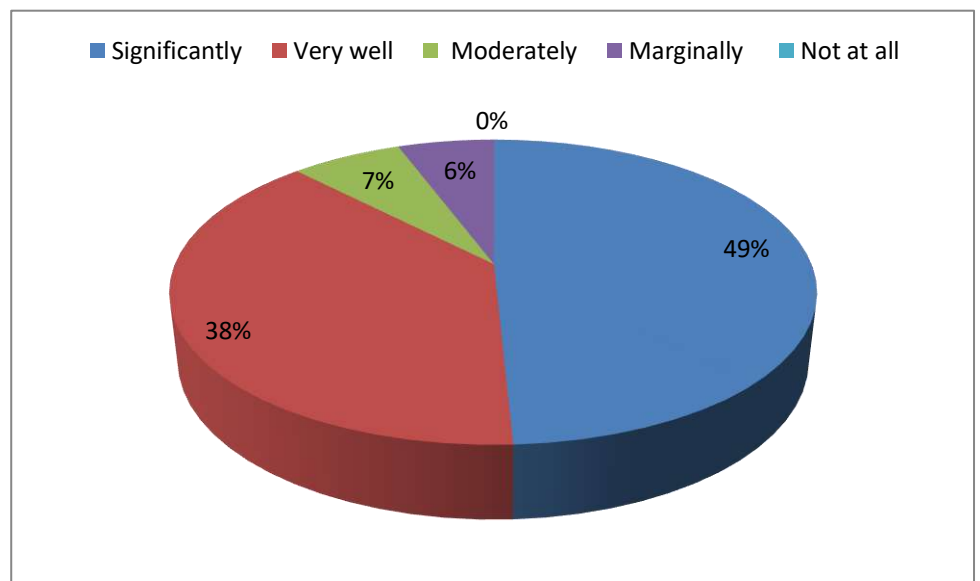
4 – Significantly

3 – Very well

2 – Moderately

1 – Marginally

0– Not at all



9. The institution provides multiple opportunities to learn and grow.

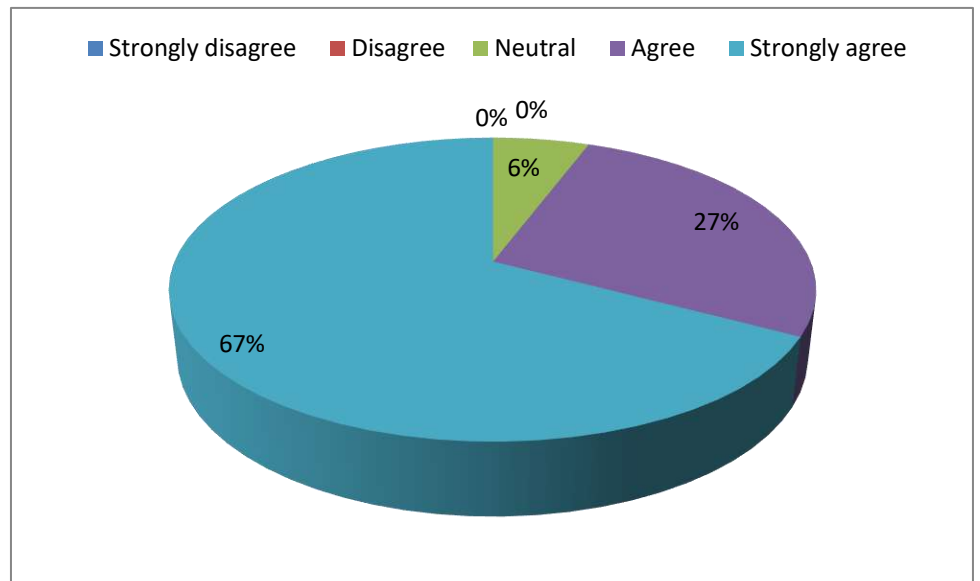
4-Strongly disagree

3-Disagree

2-Neutral

1-Agree

0-Strongly agree



10. Teachers inform you about your expected competencies, course outcomes and programme outcomes.

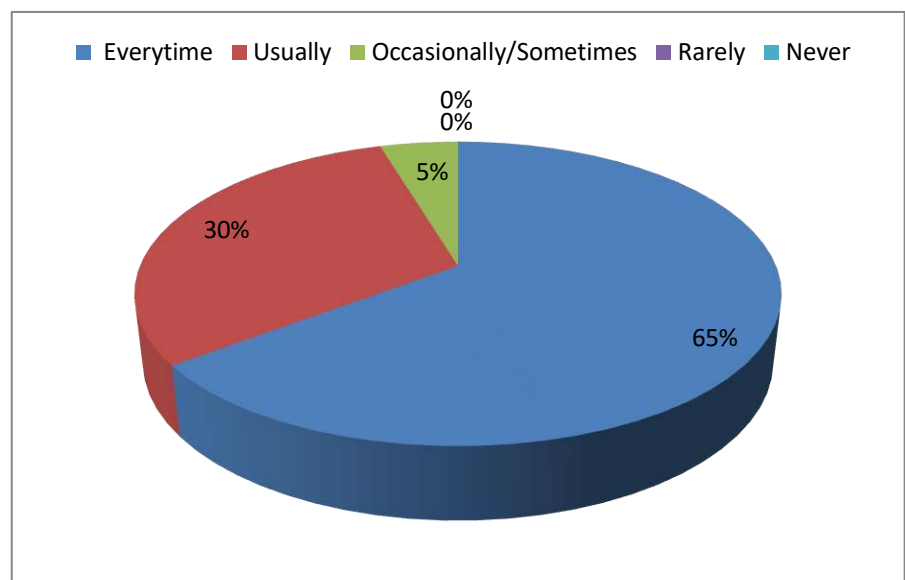
4 – Every time

3 – Usually

2– Occasionally/Sometimes

1 – Rarely

0– Never



11. Your mentor does a necessary follow-up with an assigned task to you.

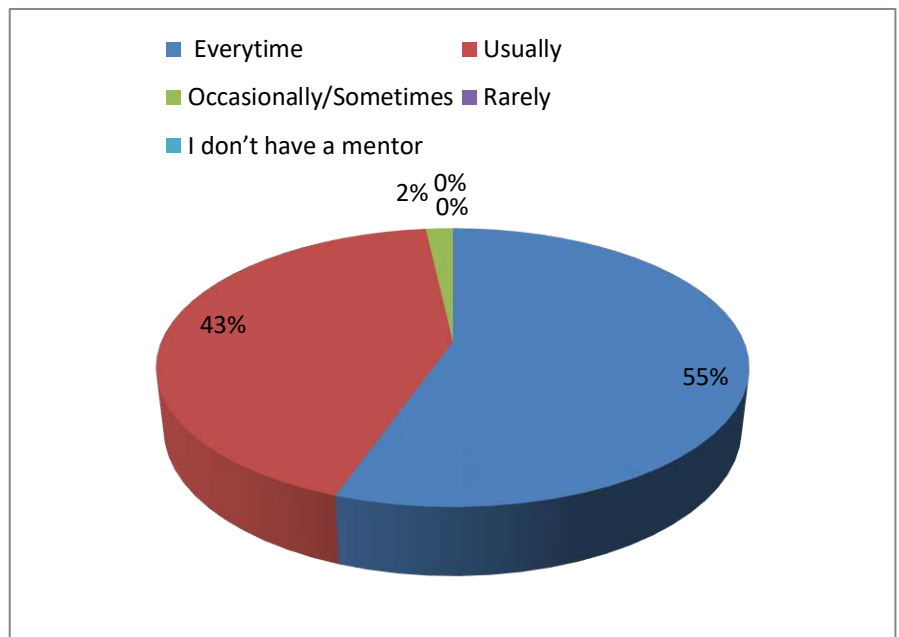
4 – Everytime

3 – Usually

2 – Occasionally/Sometimes

1 – Rarely

0 – I don't have a mentor



12. The teachers illustrate the concepts through examples and applications.

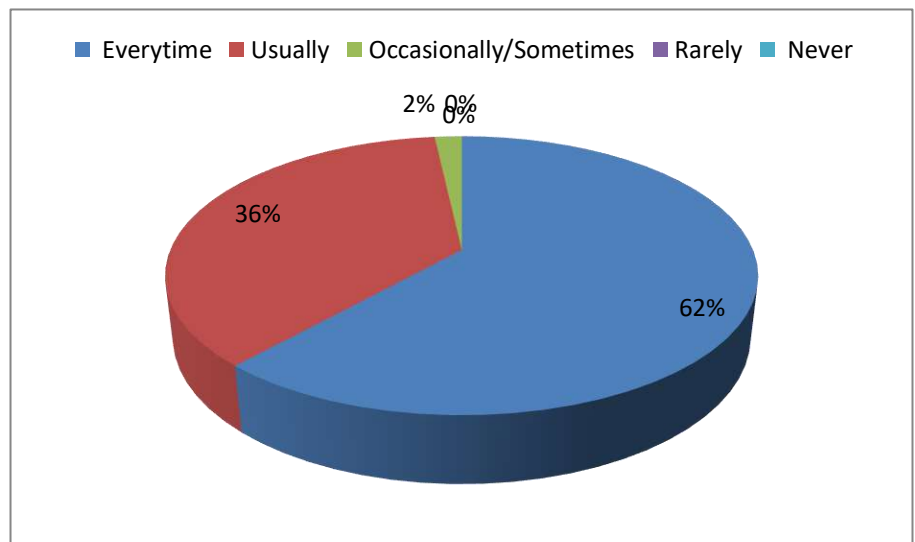
4 – Every time

3 – Usually

2 – Occasionally/Sometimes

1 – Rarely

0 – Never



13. The teachers identify your strengths and encourage you with providing right level of challenges.

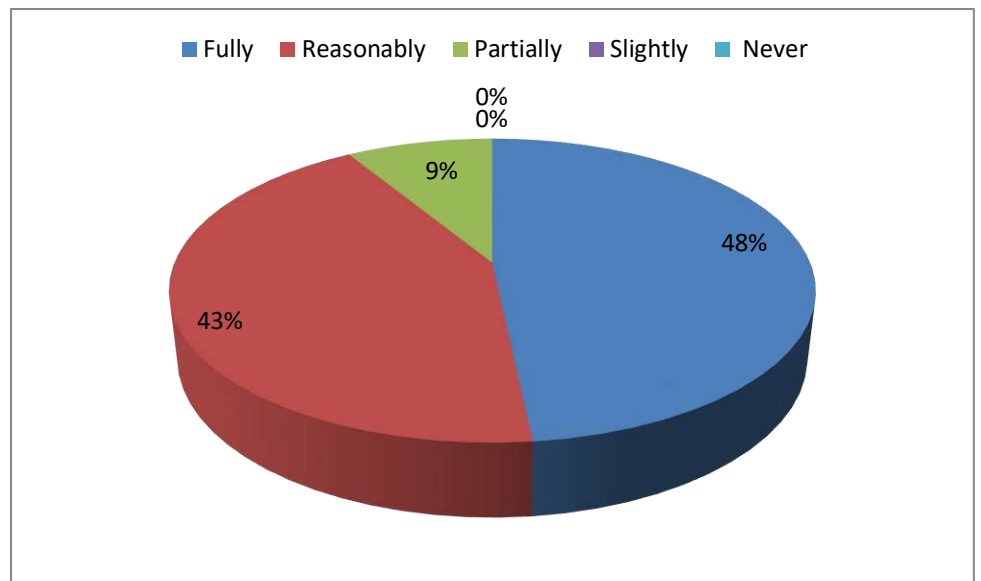
4 – Fully

3 – Reasonably

2 – Partially

1 – Slightly

0 – Never



14. Teachers are able to identify your weaknesses and help you to overcome them.

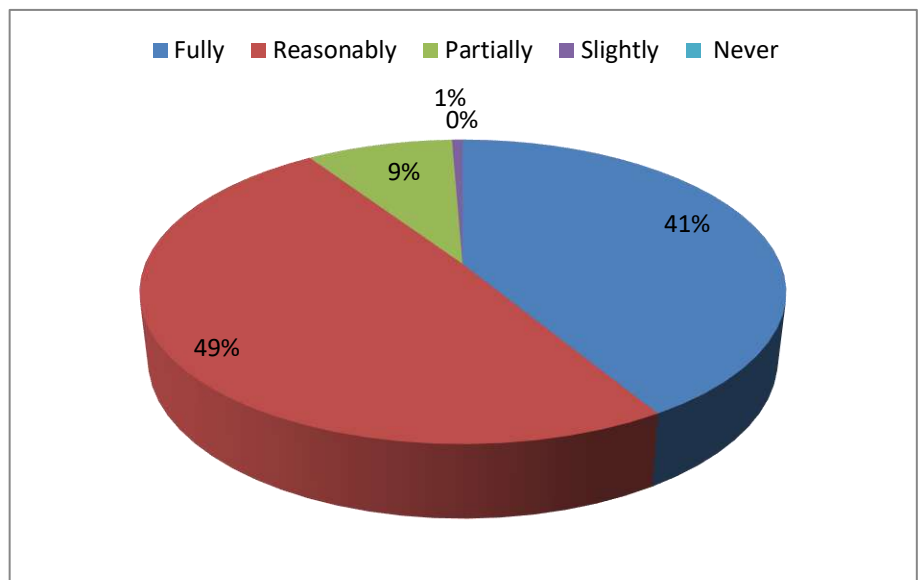
4 – Every time

3 – Usually

2 – Occasionally/Sometimes

1 – Rarely

0 – Never



15. The institution makes effort to engage students in the monitoring, review and continuous quality improvement of the teaching learning process.

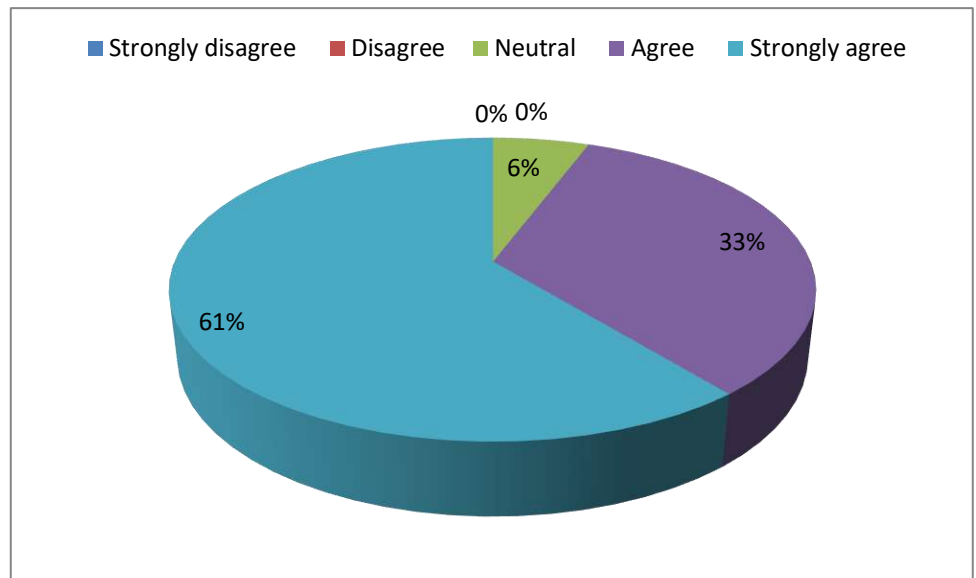
4-Strongly disagree

3-Disagree

2-Neutral

1-Agree

0-Strongly agree



16. The institute/ teachers use student centric methods, such as experiential learning, participative learning and problem solving methodologies for enhancing learning experiences.

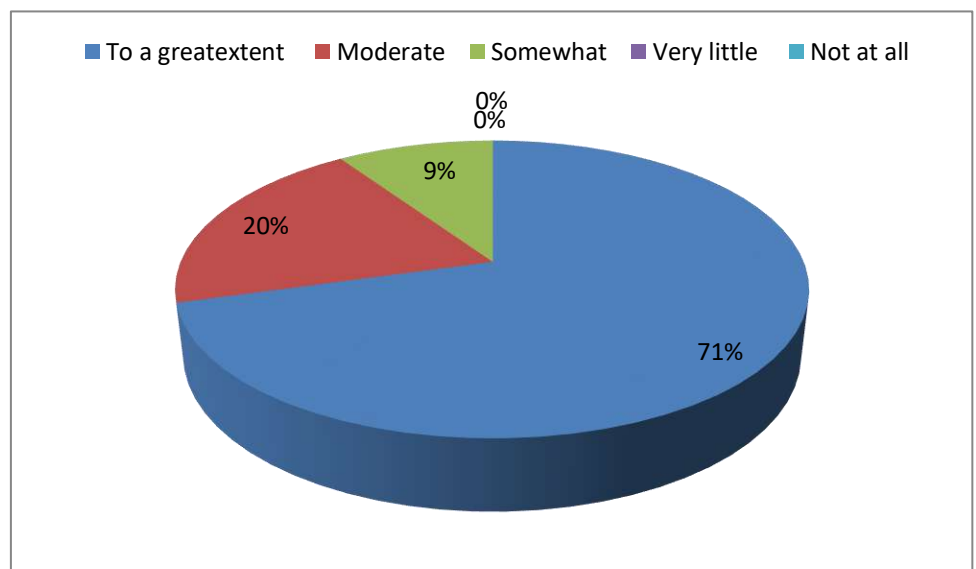
4- To a great extent

3- Moderate

2- Somewhat

1- Very little

0 - Not at all





17. Teachers encourage you to participate in extracurricular activities.

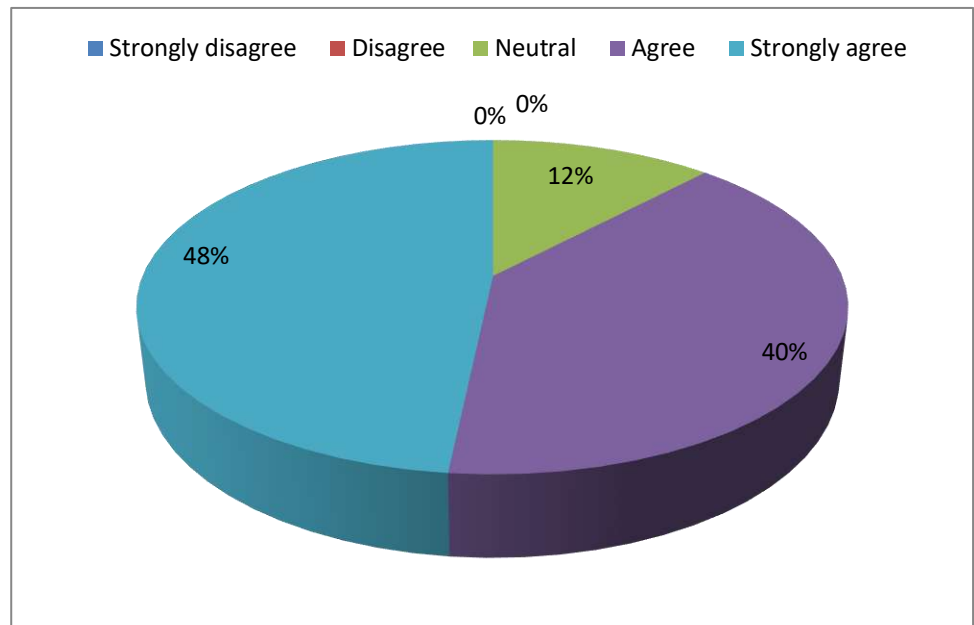
4-Strongly disagree

3- Disagree

2-Neutral

1-Agree

0-Strongly agree



18. Efforts are made by the institute/ teachers to inculcate soft skills, life skills and employability skills to make you ready for the world of work.

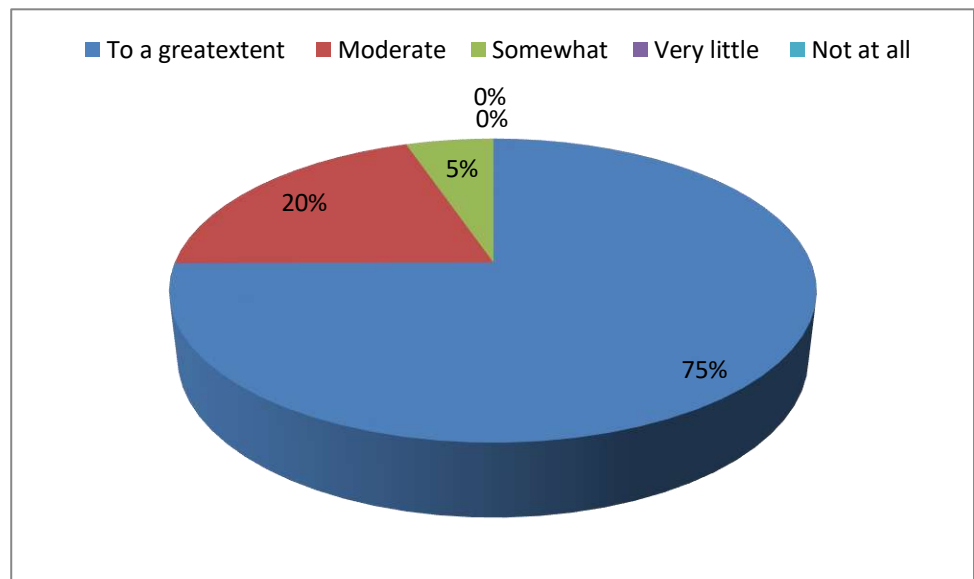
4 – To a great extent

3 –Moderate

2 – Somewhat

1 – Very little

0 – Not at all



19. What percentage of teachers use ICT tools such as LCD projector, Multimedia, etc. while teaching.

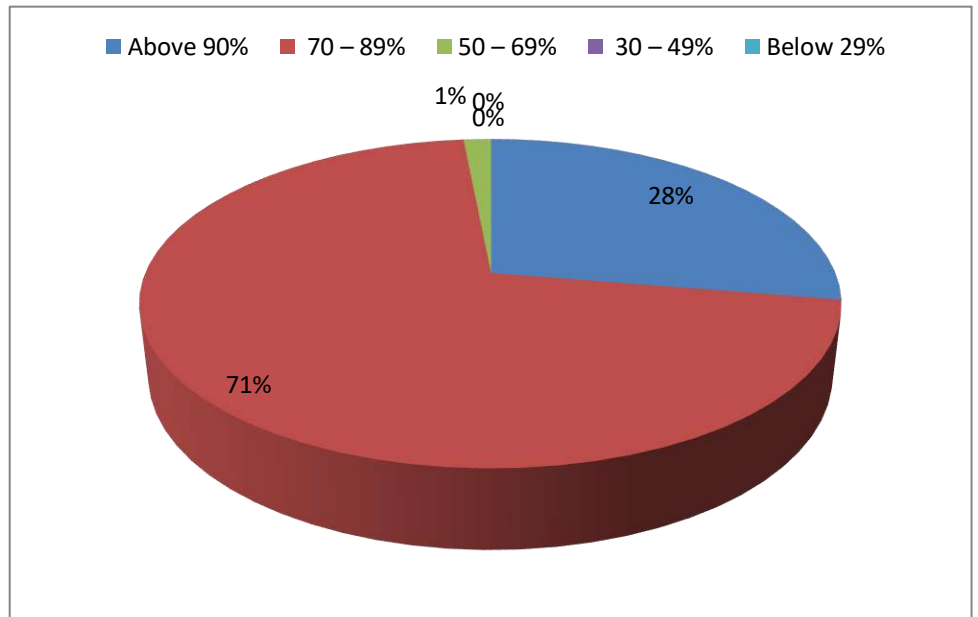
4 – Above 90%

3 – 70 – 89%

2 – 50 – 69%

1 – 30 – 49%

0 – Below 29%



20. The overall quality of teaching-learning process in your institute is very good.

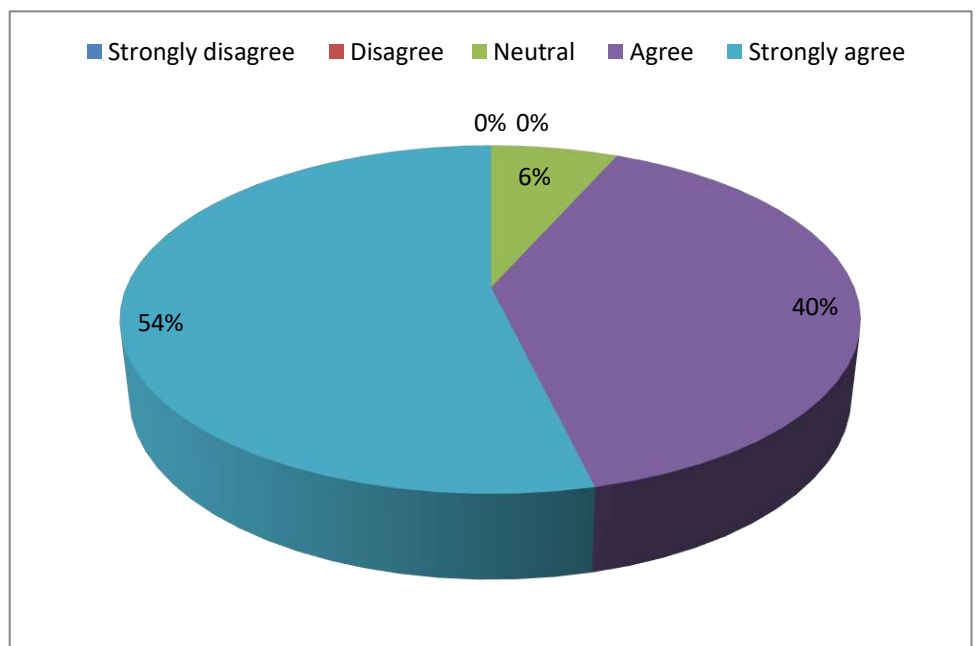
4-Strongly disagree

3-Disagree

2-Neutral

1-Agree

0-Strongly agree



21. Give three observation / suggestions to improve the overall teaching –learning experience in your institution.

Major Suggestions given by students:

1. Establishing laboratories on emerging technologies
2. Conducting in-house internships
3. Industrial Visits



**PRINCIPAL**  
Principal  
Jyothishmathi Institute of  
Technology & Science  
Karimnagar.